

Our Drop In Services

Syringe access and disposal

Safer smoking kits

Overdose education

Naloxone and Fentanyl test strips

Shower and bathroom facilities (till 2pm)

Onsite Laundry services (last load at 2pm)

Community Lunch (every Wednesday)

Community Clothing Closet

Peer Groups and Activities

Yoga (every Tuesday and Thursday)

Harm Reduction Counseling

Onsite case management services

Wound Care, HEP C + HIV testing and treatment with Baltimore City Health Department Van (every other Wednesday)

COVID-19 vaccine clinics (call to check times)

PPE and Hand Sanitizer

General & Feminine Hygiene Kits

Safer Sex Materials

Case Management Services

aasherrill@charmcityclinic.org

Assistance in applying for housing

Assistance in applying for benefits

Connection to Mental Health and Medical care

Transportation assistance

Prescription support

Substance use treatment

Budget Management

Assistance in obtaining personal documents; ID's Birth Certificate

Find us online!

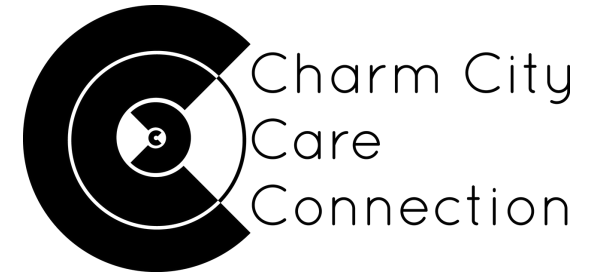
charmcitycareconnection.org/



@charmcitycareconnection



facebook.com/Charmcityclinic/



Harm Reduction Tip of the Week!



7/11/22



1214 N Wolfe St,
Baltimore, MD 21213

443-478-3015

Hours

Mon-Thurs

Open 10am-12:00 pm
& 12:30pm-3:30pm

Closed 12-12:30pm

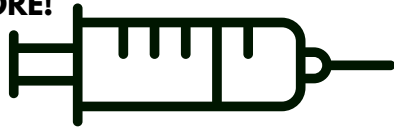
Closed all day Friday

WHAT TO DO IF YOU FIND USED SYRINGES...

-IF YOU FIND A SIGNIFICANT AMOUNT OF USED SYRINGES IN OR AROUND THE AREA OF 21213, FEEL FREE TO CONTACT CHARM CITY CARE CONNECTION AT 443-478-3015

-WE ALSO ACCEPT USED SYRINGES AND HAND OUT EMPTY SHARPS CONTAINERS FOR COLLECTING MONDAY-THURSDAY 10AM-12PM, 12:30PM-3:30PM

-VISIT [HTTPS://WWW.NASEN.ORG/MAP/](https://www.nasen.org/map/) TO LOCATE A SYRINGE SERVICE PROGRAM NEAR YOU THAT CAN ASSIST WITH SYRINGE CLEAN UPS AND MORE!

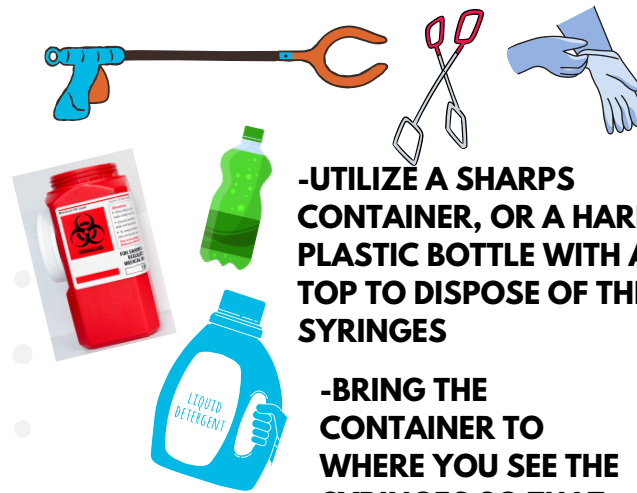


HOW TO SAFELY DISPOSE OF SYRINGES ON YOUR OWN

-STAY VIGILANT WHEN APPROACHING THE AREA TO MAKE SURE YOU DO NOT STEP ON USED SYRINGES. IT'S A GOOD IDEA TO WEAR CLOSED TOED SHOES



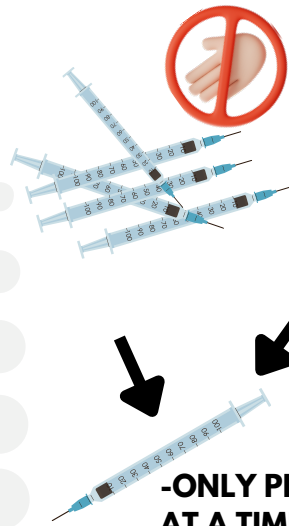
-TRY NOT TO PICK UP SYRINGES WITH YOUR BARE HANDS, AT THE MINIMUM, WEAR GLOVES, BUT A GRABBER OR TONGS ARE GREAT TOOLS TO USE TO REDUCE RISK OF NEEDLE STICK INJURIES



-UTILIZE A SHARPS CONTAINER, OR A HARD PLASTIC BOTTLE WITH A TOP TO DISPOSE OF THE SYRINGES

-BRING THE CONTAINER TO WHERE YOU SEE THE SYRINGES SO THAT YOU DO NOT HAVE TO TRAVEL WITH AN EXPOSED USED SYRINGE AND PLACE IT ON THE GROUND

-IF IN A PILE, SEPARATE THE SYRINGES WITH A GRABBER/TONGS, NEVER WITH YOUR HANDS



-ONLY PICK UP ONE SYRINGE AT A TIME, ALWAYS BY THE BARREL/MIDDLE PORTION OR PLUNGER TO AVOID THE NEEDLE POINT

-INSERT THE SYRINGE INTO THE SHARPS CONTAINER WITH THE NEEDLE POINT FACING DOWN



-AFTER INSERTING THE SYRINGES, CLOSE THE CONTAINER WITH THE TOP AND SEAL WITH TAPE IF YOU HAVE ANY

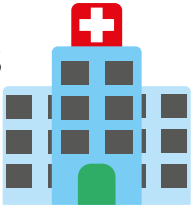
-NEVER PLACE USED SYRINGES IN A TRASH CAN OR RECYCLING BIN, IT PUTS YOU AS WELL AS OTHERS AT RISK OF NEEDLE STICK INJURIES



-CAREFULLY REMOVE & DISPOSE OF YOUR GLOVES, THEN WASH YOUR HANDS WITH SOAP & WATER

WHAT TO DO IF YOU'RE ACCIDENTALLY STUCK/ CUT BY A USED NEEDLE?

-SEEK IMMEDIATE MEDICAL ATTENTION (TESTING FOR HIV, HEP B, AND HEP C MAY BE RECOMMENDED AS WELL AS POST-EXPOSURE MEDICATIONS)



-WASH NEEDLESTICKS AND CUTS WITH SOAP AND WATER.



-IF INJURY OR BLOOD CONTACT IS WITH MUCOUS MEMBRANES (I.E., EYES, NOSE, MOUTH) FLUSH WELL WITH WATER.